



# Air-Operated Piston Pumps

## Standard design

### PA Hygienic series

Wetted parts in AISI 304 (only for PA 140) or 316 stainless steel in both, short or long versions. Pump components are assembled with quick-release clamps for quick and easy strip cleaning.

Connections: DIN - SMS - IDF - BS / RJT - DS - CLAMP.

### PA Industrial series *(While stocks last)*

Wetted parts in AISI 316 stainless steel. Short or long versions. Pump components are screwed together.

Connections: GAS thread/BSP.

### PAR Light duty industrial series

Wetted parts stainless steel in AISI 316. Pump components are screwed together. Very cost effective. Connections: GAS thread/BSP.



PA-AM  
long pump



PA-AM  
short pump



PAR  
short pump

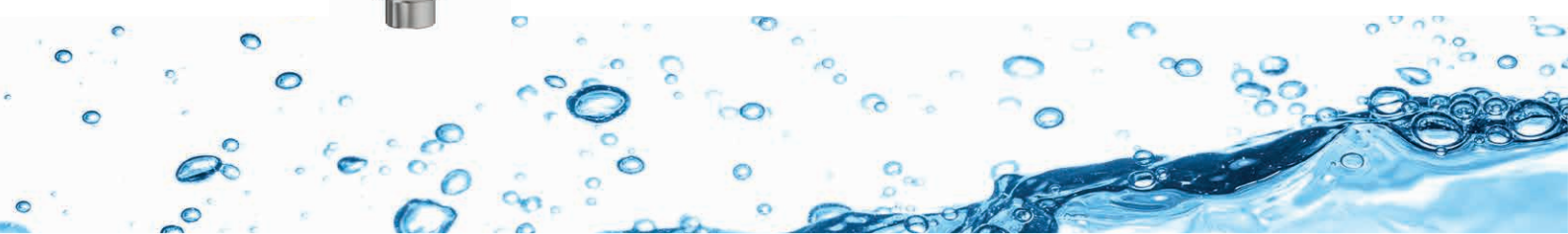
### Elastomers (FDA):

- Nitrile NBR
- Fluorocarbon (Viton)
- P.T.F.E.
- Algoflon

### Applications

Air-operated piston pumps are available in various versions, depending on the constructional features, materials and the applications for which they are to be used. They have been designed to meet the widest variety of requirements, from pumping simple products to extremely high viscosities. Including drum emptying, transfer, feed, conveying and spraying applications, especially where an easily adjustable flow rate is required. Pressures from 0 to 150 bar and flow rates from 1 to 80 l/min.

Thanks to the compressed driven air motor they are also suited for environments with potentially explosive atmospheres and in compliance with ATEX directives.



# PERFORMANCE

## PA HYGIENIC SERIES

| PUMPS          | Pressure ratio | Recomm. max. cycles per minute | Max. flow rate l/min for viscosity of 1000 cP |
|----------------|----------------|--------------------------------|---|
| PA 20A-45      | 25 : 1         | 150                            | 1   |
| * PA 30A-45    | 5 : 1          | 150                            | 2   |
| * PA 50AM-63   | 3,4 : 1        | 120                            | 7,6   |
| * PA 50AM-80   | 5,3 : 1        | 90                             | 10  |
| * PA 50AM-200  | 8,4 : 1        | 60                             | 7,5   |
| PA 50AM-230    | 14,6 : 1       | 50                             | 10,6  |
| PA 50AM-250    | 20 : 1         | 50                             | 6,2   |
| * PA 65AM-80   | 1,6 : 1        | 80                             | 20  |
| * PA 65AM-200  | 2,5 : 1        | 60                             | 17  |
| * PA 65AM-230  | 4 : 1          | 50                             | 24  |
| PA 65AM-250    | 6 : 1          | 50                             | 14  |
| * PA 80AM-200  | 2 : 1          | 60                             | 24  |
| * PA 80AM-230  | 3,3 : 1        | 50                             | 33  |
| * PA 80AM-250  | 4,5 : 1        | 50                             | 20  |
| PA 80AM-310    | 9 : 1          | 50                             | 32  |
| * PA 100AM-200 | 1 : 1          | 60                             | 37  |
| * PA 100AM-230 | 1,8 : 1        | 50                             | 52  |
| * PA 100AM-255 | 2,5 : 1        | 50                             | 52  |
| * PA 100AM-310 | 5 : 1          | 50                             | 50  |
| * PA 140A-230  | 1,6 : 1        | 50                             | 100   |
| * PA 140A-255  | 2,2 : 1        | 50                             | 100   |
| * PA 140A-310  | 4 : 1          | 50                             | 95  |

\* Available with ATEX 2G and 3G certification

## PA INDUSTRIAL SERIES

(While stocks last)

| PUMPS        | Pressure ratio | Recomm. max. cycles per minute | Max. flow rate l/min for viscosity of 1000 cP |
|--------------|----------------|--------------------------------|---|
| * PA 40I-63  | 5,5 : 1        | 120                            | 4,8   |
| * PA 40I-80  | 8,8 : 1        | 90                             | 6,4   |
| * PA 40I-200 | 14 : 1         | 60                             | 4,7   |
| PA 40I-230   | 24,4 : 1       | 50                             | 6,7   |
| PA 40I-250   | 33,2 : 1       | 50                             | 4   |
| * PA 65I-80  | 1,6 : 1        | 80                             | 20  |
| * PA 65I-200 | 2,5 : 1        | 60                             | 17  |
| * PA 65I-230 | 4 : 1          | 50                             | 24  |
| PA 65I-250   | 6 : 1          | 50                             | 14  |

\* Available with ATEX 2G and 3G certification

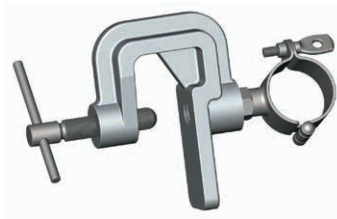
## PAR SERIES

| PUMPS     | Pressure ratio | Recomm. max. cycles per minute | Max. flow rate l/min for viscosity of 1000 cP |
|-----------|----------------|--------------------------------|---|
| PAR 30-50 | 4 : 1          | 180                            | 7,5   |
| PAR 40-50 | 2 : 1          | 180                            | 12  |
| PAR 50-50 | 1 : 1          | 180                            | 25  |
| PAR 50-65 | 2 : 1          | 160                            | 25  |
| PAR 65-50 | 0,7 : 1        | 160                            | 55  |
| PAR 65-65 | 0,7 : 1        | 160                            | 55  |

# ACCESSORIES



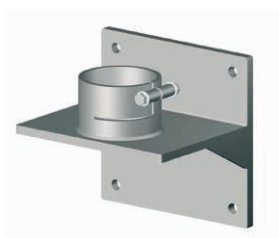
2" threaded clamp for drums



Double clamp



Outlet Pulsation Damper



Wall brackets for holding and fixing pumps

## VARIOUS OPTIONS

Air-operated piston pump with mobile lift.



With pneumatic cylinder and control panel.

Manual sliding lift model with counterweight assistance.



Short air-operated piston pump on tripod with wheels.



Short air-operated piston pump with scraper plate to empty barrels or cylindrical tanks. Excellent for high viscosity products.





Pneumatic lift to empty barrels.

Unit with double pneumatic pistons for vessels with a diameter exceeding 700 mm, including an air operated piston pump and scraper plate. For mixtures, jams, creams etc... to be transferred after processing.



Pneumatic lift with scraper plate for vessels with diameter up to 700 mm.



C.S.F. Inox S.p.A. Strada per Bibbiano, 7 - 42027 Montecchio E. (RE) - ITALY EU  
 Ph +39.0522.869911 r.a. - Fx +39.0522.865454 - italia@csf.it - www.csf.it  
 Export Department • Commercial Étranger • Comercial Extranjero  
 Ph +39.0522.869922 - Fx +39.0522.869841 - export@csf.it - www.csf.it



All the instructions, data and representations (in whatever way executed) listed in this publication are indicative and do not bind. C.S.F. does not stand surety or undertake any obligation for the utilisation of this document and for the information contained. In particular, it does not guarantee against omissions or errors of the data and drawings here indicated.  
 Notice that the technical specifications, information and representations in this document are merely indicative and approximate. C.S.F. INOX reserves the right at any moment and without notice to modify the data, drawings and information indicated in this document.